



## **PSIGEN PSI: Capture and Fujitsu Scanners Deliver High Performance Document Imaging Solution for B&H Photo**

### **Summary**

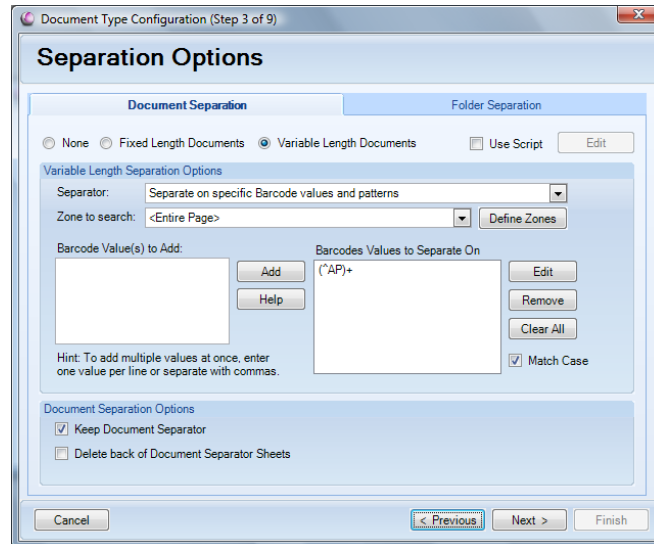
B&H Photo initially automated the capture and retrieval of accounting documents using an integrated hardware and software solution featuring PSIGEN Scan HQ and Alchemy. As internal demand for the system accelerated within and across departments, certain limitations of the initial capture deployment caused challenges. Setting up and reliably operating capture station hardware/software combinations proved especially difficult, due to complex combinations of SCSI hardware, capture accelerator cards, and driver software. Automatic capture indexing goals using barcodes were at times frustrated by the uncontrollable presence of random barcodes in the invoice documents coming from various suppliers. In the winter of 2008, the B&H Photo Information Technology department commenced a major upgrade and expansion of the capture systems, addressing initial deployment issues and setting the stage for a broader and more productive companywide deployment of document imaging.

### **A Capture Scanning Interface Technology Transition**

In the case of high performance scanning and capture software, what had once demanded dedicated accelerator cards, high speed local interfaces designed for data storage, and proprietary driver and image processing software.....has been replaced with a simple plug and play solution based on next generation standard technologies. Starting in early 2008, B&H upgraded scanning hardware to three high performance Fujitsu scanners (2 x 5750, 1 x 5650C) with PSI: Capture software, in the Accounts Payable, 420 Receiving, and Brooklyn Naval Yard locations. The Windows capture station system to scanning device integration is achieved using ISIS interface over standard Universal Serial Bus (USB) connection. This connection proved without doubt during installation that it is far easier to setup and maintain than the original configurations.

### **Taming Random Barcodes**

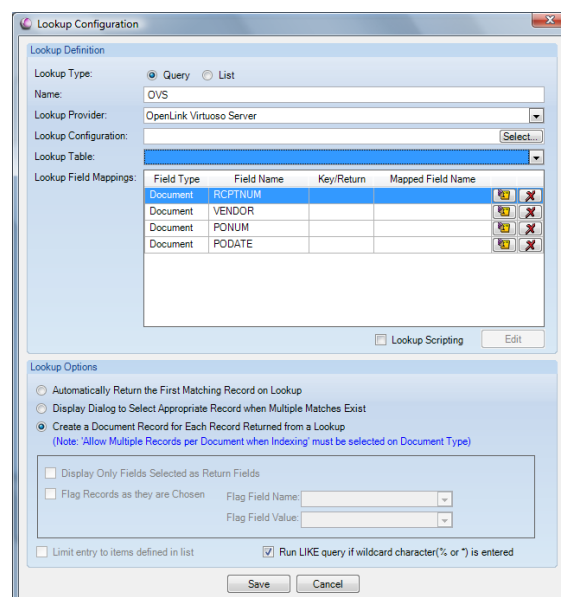
An ongoing problem in invoice processing was the need to successfully ignore the presence of a wide range of irrelevant barcodes in the multi-page invoices of various B&H Photo vendors. PSI: Capture provides an elegant solution through the use of Barcode Value and Pattern Analysis. The first page of each variable length, multi-page vendor invoice always receives an internally generated, 2D Data matrix barcode label before capture. This barcode is automatically generated and printed to labels, using Zebra Barcode Label Printers, as part of the initial invoice encoding process in Accounts Payable. The first characters of each Data Matrix label contain the characters 'AP', and the PSI:Capture barcode recognition separates on barcodes containing these characters. This is configured in step 3 of 9 for the relevant document types, as follows:



In addition, the barcode indexing tab is configured the key field for database lookup to the second barcode on the separator sheet. As a result, the random barcodes which may appear on any page of the invoices, and containing index information specific to the supplier (but not B&H), are ignored.

### Secure, Multi-Record Database Lookup

The database lookup path for auto-indexing must traverse both Oracle and Informix Live systems, and return either single or multiple records per document. In addition, database security requirements dictate that production level databases be front ended by an integration platform. To support an indirect, multi-hop lookup on the production level database systems, PSIGEN developed a new database lookup method to Openlink Virtuoso Server, a database integration platform system recently added to the database server environment at B&H. The new lookup capabilities facilitate the production database security requirements while performing automatic indexing:





PSIGEN also added another method for handling database lookups that encounter no key value. A set of QA functions were added to the index module, so that operators can handle database lookup exceptions directly within the workflow of each batch by examining documents using the QA tools to determine index values when the lookup row does not exist in the databases. Database lookup performance has been excellent....roughly 30 seconds to perform single and multi record lookups per 100 multipage documents.

### **Ad Hoc Reporting**

The Reporting Module is used frequently to measure capture performance across the Receiving and Accounts Payable scanning operations. Naftali Fishman, the IT Manager responsible for the deployment and management of the system, does not even save and re-use reports. “The Ad Hoc Query Builder in the reporting Module is so fast and easy that I create whatever reports I am interested in in a matter of seconds”, he said. “PSIGEN delivered a big step forward for our document imaging system with PSI:Capture, and they continue to rapidly enhance the system”.

### **Growing the Installation**

The continuing improvement in capture operations has increased demand for usage of document imaging in a number of additional departments, all of which are scheduled to come onboard with the document imaging system in the near future. These include the Computer Services Department, which has roughly 200K pages of back-files to convert, the Treasury Department, which will be scanning multiple documents including checks, and the Corporate Legal department, which will be scanning a variety of contracts.

### **Complementary Third Party Solution Components in Summary**

<b>Capture Software:</b>	PSI: Capture Enterprise 3.3 from PSIGEN Software
<b>Content Management System:</b>	Alchemy (Captaris now Opentext)
<b>Scanners:</b>	Fujitsu 5750s and 5650C
<b>Database Integration:</b>	Openlink Software’s Virtuoso
<b>Barcode Label Printers</b>	Zebra



## **About B&H Photo**

B&H is world renowned for more than 30 years as the place to be for all photographic, video, pro audio, digital imaging, electronics, and computer needs. Operating from a 70,000 plus square foot store in midtown Manhattan, B&H has earned a reputation as the 'professionals source' for the most sophisticated new electronics technology, always at discount prices, and backed by expert in store and online consulting . More than 170,000 items are available for shipment every business day, all from the New York City facilities or the ever expanding ecommerce company web-site .

## **About PSIGEN Software, Inc**

PSIGEN helps organizations convert content into managed digital assets. Our largest customers include service providers, business process outsourcers, and major corporations. We have significant customer concentrations in financial services, healthcare, manufacturing, retail, and energy. Our channel partners include document imaging value added resellers, major brand MFP dealers, Microsoft solution providers, and document management software vendors.

Web Site: [www.psigen.com](http://www.psigen.com)

Email: [sales@psigen.com](mailto:sales@psigen.com)

Phone: 949-916-7700